

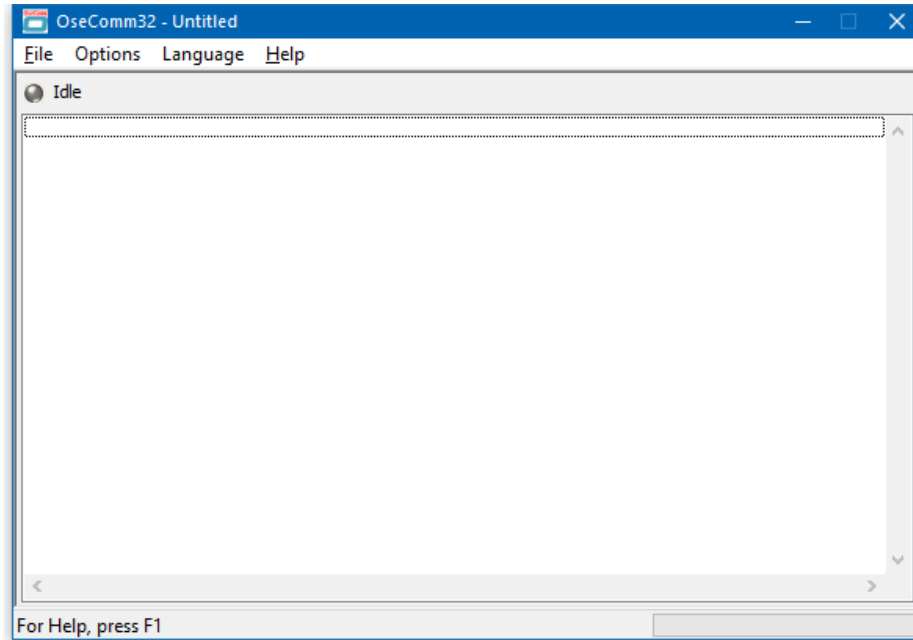
Install OseComm32.

Connect a ET350 to the PC, if the PC has an internet connection the USB drivers should automatically install. If not unplug the ET350 and run 'USB Driver Installer.exe'

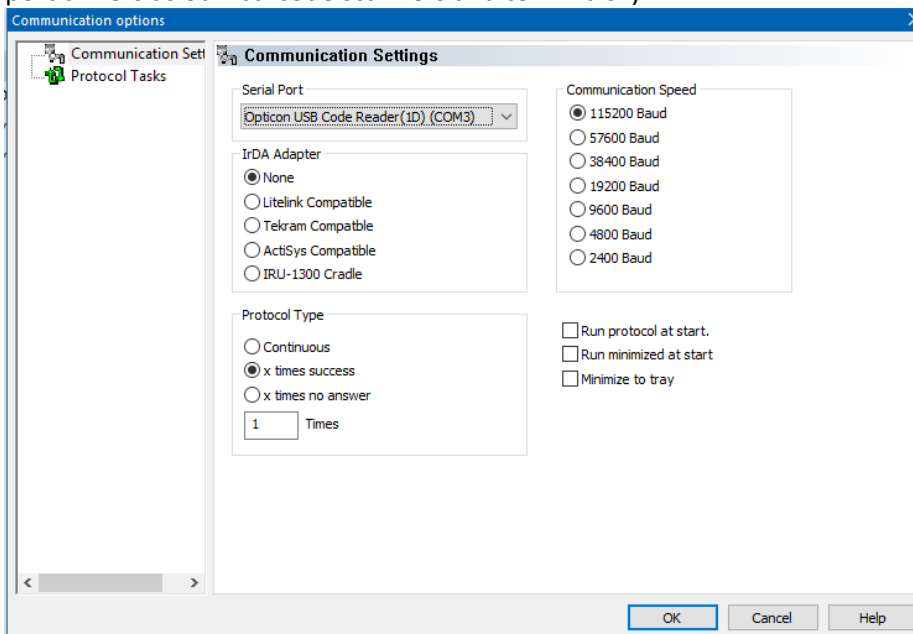
Make sure "OPN/OPR/MDI.... Drivers' is checked and click install.

When installation is completed plug the ET350 back in.

Run OseCom32.exe

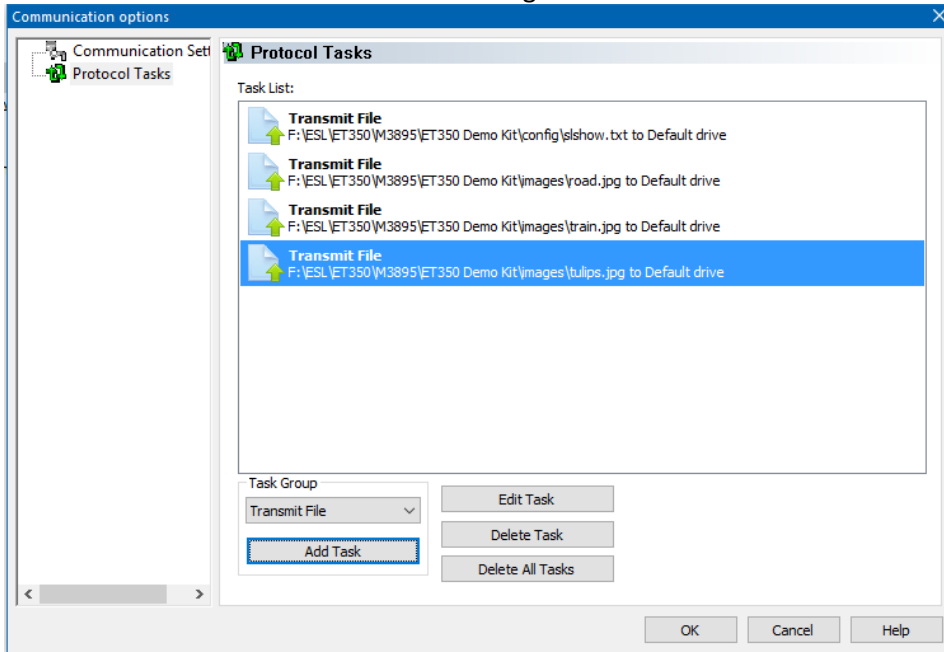


Configure the communication options. 'Options->Communication settings' The ET350 should be visible in the drop down list as a 'Opticon USB Code Reader' (the ET350 uses the same USB serial port drivers as our barcode scanners and terminals.)



Add a "Transmit File" protocol Task and add the file
\\config\\slshow.txt
Add a "Transmit File" protocol Task and add the files
\\imagesg\\road.txt
\\imagesg\\train.txt
\\imagesg\\tulips.txt

The Protocol task list should look something like this:



Click 'OK' to go back to the main window

Now select "Options->Start protocol" After uploading the files, the ET350 should start to play the slideshow.

