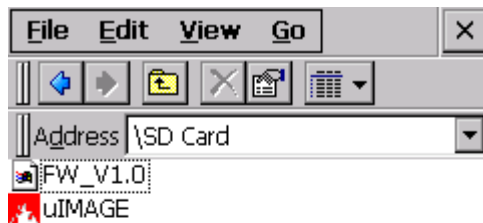


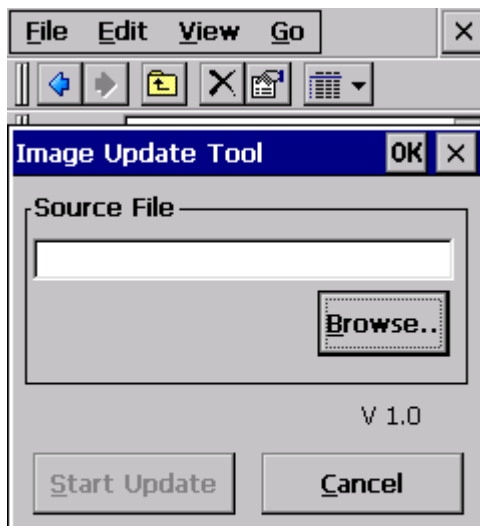
uIMAGE User's Manual

Step 1: Copy firmware file to SD Card

ex. : copy FW_V1.0 to SD card then insert the card to hand-held terminal device.

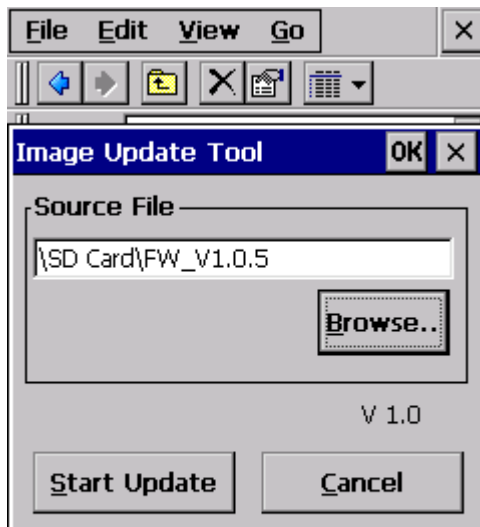
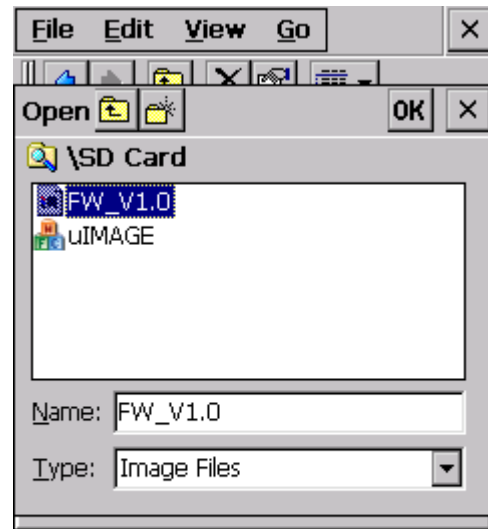
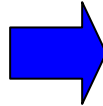
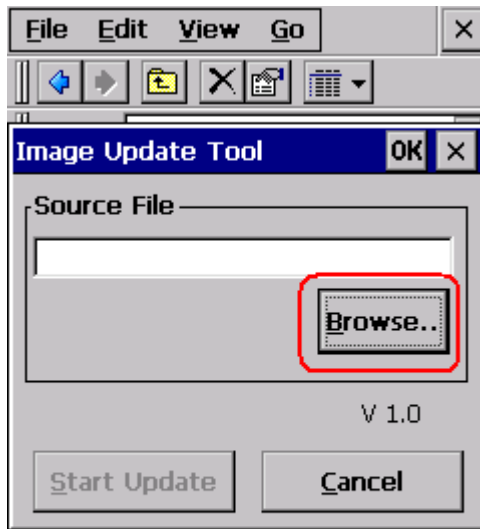


Step 2: Run the uIMAGE utility



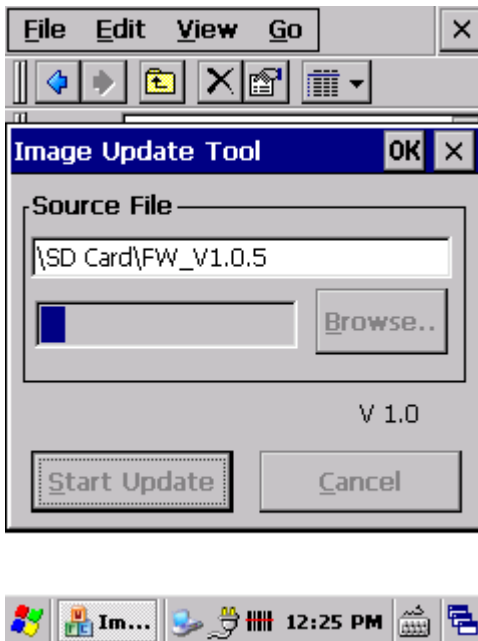
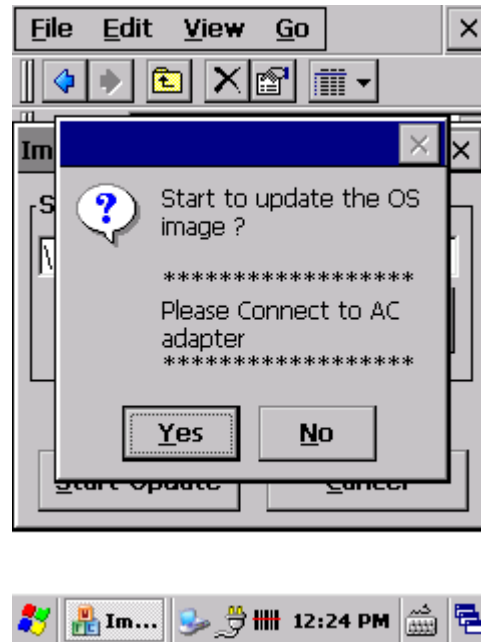
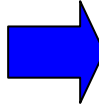
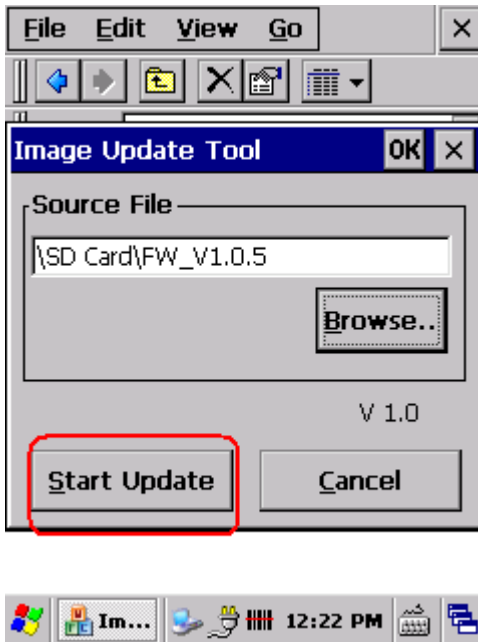
Step 3: Open the firmware file

Use Brows button to open the file



Step 4: Start to update the new firmware

- Connect to AC adapter
- Press "Start Update" button
- Press "Yes" button to start the process



Step 5: Restart the device

The following message will be pop-up when the update is done. Please undergo a cold boot to complete the update.



Step 6: Check the firmware information

To confirm the new firmware version, please check the "Device Information" in the control panel.

