

OVERVIEW



BEFORE GETTING STARTED

1. Open the package and check every accessory:



Main Unit

Quick Guide  
(Not Shown)



Battery Pack  
(3000mAh)



USB Client  
Cable for Terminal



Power Adapter  
(5VDC/2.6A)



Ear/Microphone Set



Stylus



Power Cord



GSM Earphone



CF Support Guide

Note: availability depends of PHL-7200 model

CAUTION:

The PHL-7000 will be powered on when you install Battery Pack. Power off PHL-7000 after touch screen calibration and charge batteries for at least 6 hours. Do not turn on the PHL-7000 for the first time until batteries are charged for at least 6 hours. Always charge batteries at 0°C~45°C (32°F~113°F) environment temperature. The Charger LED will be turned to green color when battery charging is finished.

2. Installing the Battery Pack

- 1) Detach the Hand Strap.
- 2) Turn the battery cover latches downwards and lift the battery cover away.
- 3) Insert the Battery Pack into the battery compartment with the label facing out, and make sure the battery fits into place.
- 4) Place the battery cover by inserting the top first, and then press the bottom in firmly. Turn the battery cover latches upwards to secure the cover to the PHL-7000.

3. Connect Power Adapter to Charge the PDT

- 1) Insert DC connector into bottom case of the PHL-7000.
- 2) Connect Power Cord to power adapter.
- 3) Insert power cord to AC Outlet.



USING THE KEYPAD

The keypad comprises 52 keys (alpha, numeric, arrow, functional and Fn) and 4 scan buttons.

- 1) Press "SHIFT" to onetime toggle between upper-case character and lower-case ones.
- 2) Press "Caps" to toggle between upper-case character and lower-case ones.
- 3) Press "Fn" to toggle Function Mode.

Special Functions

Sequence of Keys	Description	Sequence of Keys	Description
F1	Launch of Application 1	Fn A	Launch of Application 5
F2	Launch of Application 2	Fn B	Launch of Application 6
F3	Launch of Application 3	Fn C	Launch of Application 7
F4	Launch of Application 4	Fn D	Launch of Application 8

Special Functions

Sequence of Keys	Description	Sequence of Keys	Description
Fn >	Increase of Brightness	Fn 4	Paste
Fn <	Reduction of Brightness	Fn 6	Delete
Fn ↓	Page Down	Fn 8	— Minus Sign
Fn ↑	Page Up	Fn 7	Copy
Fn W	Volume Up	Fn 8	&
Fn X	Volume Down	Fn 9	*
Fn 1	@	Fn 0	Start Menu
Fn 2	,	Fn *	Space
Fn 3	+		

BATTERY PRODUCT SAFETY

Lithium-ion Battery Packs might get hot, explode, ignite and/ or cause serious injury in case of misuse.

Please follow the safety warnings listed below:

- A. Do not throw the battery into fire. Do not expose the battery to high temperatures.
- B. Do not connect the positive Battery Pack with negative Battery Pack to each other with any metal object (like wire).
- C. Do not carry or store Battery Pack together with metal objects.
- D. Do not pierce the Battery Pack with nails or drills, strike the battery pack with a hammer, step on the Battery Pack or otherwise expose it to strong impacts, shocks or excessive force.
- E. Do not solder directly onto the Battery Pack.
- F. Do not expose Battery Pack to liquid or allow the battery contacts to get wet.
- G. Do not disassemble or modify the Battery Pack. The Battery Pack contains safety and protection measures, which, if damaged, may cause the Battery Pack to generate heat, explode or ignite.
- H. Do not discharge the batteries outside the PHL-7000. Do not use the battery in another device then the PHL-7000 or IRU-7000 series battery chargers. Otherwise, the Battery Pack can be damaged, the Battery Pack can be damaged or its life expectancy reduced. If the device causes any abnormal current to flow, it may cause the Battery Pack to become hot, explode or ignite and cause serious injury.
- I. In the event the Battery Pack leaks and the fluid gets into one's eye, do not rub the eye. Rinse well with water and immediately seek medical care. If left untreated, the battery fluid could cause damage to the eye.



## SETTING DEVICE

### 1. Initial Boot Up

The initial boot up screen will be displayed when you install battery pack at the first time. Do not remove Battery Pack when system is at initial boot up.



### 2. Calibrating Touch Screen

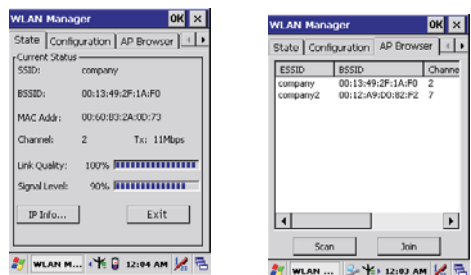
This calibration is already done by manufacturer. If you want to calibrate the touch screen again, please tap "Start" --- "Settings" --- "Control Panel" --- "Stylus" --- "Calibration" --- "Recalibrate", then hold the stylus and press on the center of each target as it moves around the screen.

**CAUTION:** Be sure to use the supplied stylus or plastic-tipped pens for touch screen display. Don't use pencil, pen or any sharp object on touch screen display.

### 3. Setting Up Wireless LAN

- 1) Press "Start"---"Settings"---"Control Panel"--- "WLAN Manager".
- 2) Launch the WLAN Manager to Enable WLAN device.
- 3) Into AP Browser tab, tap Scan button to renew the network.
- 4) Select a network, tap the Join button or double tap it for more options.
- 5) Press OK to save all your WLAN settings.
- 6) Tap the "Exit" button to Disable WLAN device.

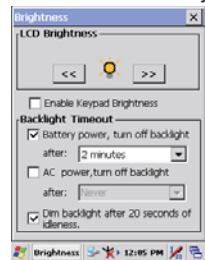
**Note :** availability depends of PHL-7200 model.



### 4. Bluetooth Device Properties

- 1) Press "Start"---"Settings"---"Control Panel" --- "Bluetooth Device Properties" to enable Bluetooth device.
- 2) Wait for 20 seconds in order to initialize the Bluetooth hardware correctly.
- 3) Press Scan device button to search for Bluetooth devices.

**Note :** availability depends of PHL-7200 model.



### 5. Brightness Setting

The device is equipped with backlight for both sunlight-readable LCD display and keypad. To adjust the LCD backlight brightness, press the "Fn" key and then press navigation key ">" or "<" to adjust display brightness. Or Press "Start"---"Settings"---"Control Panel" --- "Control Center" "Brightness" to set both LCD and Keypad brightness.

### 6. Volume Adjusting

- 1) Press "Start"---"Settings"---"Control Panel" --- "Volume & Sounds".
- 2) Adjust the volume bar to meet your demand.

**Note:**

To adjust the sound, press the "Fn" key and then press "W" or "X" key to up or down the sound.



## USING THE APPLICATIONS

### 1. Execute an "Application"

Tap an application icon on the desktop, or tap "Start"---"Programs". Select one of the applications.

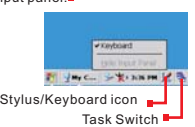
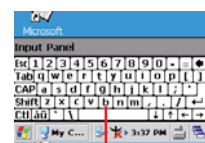
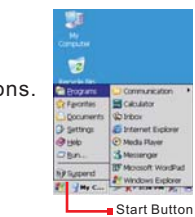
### 2. Close an "Application"

Tap the tab of "X" to close the application.



### 3. Using the Software Input Panel

- 1) Tap the "Stylus" icon on the "task bar".
- 2) Tap the "Keyboard" icon.
- 3) When Software Input Panel appears, input characters with the Stylus.



### 4. Task Switch

Win CE can execute multiple applications at the same time.

- 1) Press "Task Switch" icon in the task bar.
- 2) Select the task(s) you want in the task menu. During the execution of applications, when you select the menu "Desktop", brings the selected application to the foreground. It does not close the other applications.

## BAR CODE READING

### CAUTION:

Remove the protective film from the scan window before use.

#### 1. Start your application

#### 2. Aim the scan window at the bar code

#### 3. Press one of the three bar code reader trigger buttons

#### 4. Aiming :

1D laser: aim the red laser beam on the center of the bar code  
Bar codes can be read from 50 to 650 mm distance.



Good scanning positions



Bad scanning positions



2D CMOS: 4 green aiming spots are visible. Position the bar code between the 2 outer green light spots. Ideal reading distance is where the 2 center green light spots joins. The bar code is read in the red illumination area. Bar codes can be read from 45 to 260 mm distance.



Good scanning positions



Bad scanning positions

### 5. Check the bar code reading result

You can verify the result of the bar code reading in your application, by beep sound(s) or the LED indicator.

## USING PERIPHERALS

### 1. Using CF Type Peripherals

- 1) Remove the 4 screws from the End Cap with a screw driver, Torx type and size 8 (T8).
- 2) Insert the CF memory cards into the CF Support Guide. Insert a correctly oriented CF card.
- 3) Using 4 ~ 4.5 kgf-cm torque to fix the screws for End Cap.

**Note:** availability depends of PHL-7200 model.



### 2. Using SD / MMC Type Card

- 1) Remove the 4 screws from the End Cap with a screw driver, Torx type and size 8 (T8).
- 2) Insert a correctly oriented SD/MMC card.
- Note:** To remove SD/MMC card, press the card again and slot will pop out card automatically.
- 3) Using 4 ~ 4.5 kgf-cm torque to fix the screws for End Cap.

The SD/MMC slot support memory card only. It does not support SD I/O peripherals.



### 3. USB Connection

Connect the USB client cable to synchronize data with a computer.

### CAUTION:

Be sure the HRS mark on the connector of USB cable to be upward when you insert cable to devices. To remove cable from device, press both buttons on connector and then remove connector from device.

**Note:** Use Microsoft ActiveSync version 3.7 or above.



## RESETTING DEVICE

### 1. Warm Reset

- 1) If an application hangs, initiate Warm Reset to terminate the application.
- 2) Warm Reset will close all applications and clear the working RAM, but all files will be preserved.
- 3) To perform Warm Reset, press "F1" and "F4" buttons simultaneously.

### 2. Cold Reset

### CAUTION:

Try Warm Reset before you initiate Cold Reset. All applications will be closed, and working RAM as well as all files will be cleared if you initiate the Cold Reset. It is strongly recommended to back up your files to Flash ROM, Flash Card or PC.

- 1) You can use Cold Reset to initialize the PHL-7000 if the WinCE.NET OS locks up or in case a Warm Reset has no effect.
- 2) To perform Cold Reset, press "Power", "F1" and "F4" buttons simultaneously.
- 3) Device will boot up after Cold Reset.

COMMUNICATION

MANAGEMENT

HUMANIZATION



## USER AND PRODUCT SAFETY

- A. Do not stare into the laser beam directly or shine it into eyes.
- B. Never use strong pressure onto the screen or subject it to severe impact, as the LCD panel could become cracked and possibly cause personal injury. If the LCD panel is broken, never touch the liquid inside, because the liquid irritates the skin.
- C. Use only the original approved AC adapter with the PHL-7000. Use of an unapproved AC Adapter could result in electrical problems, or even cause a fire or electrical shock to the user.
- D. Do not disassemble the PHL-7000. Servicing should be done by Opticon only. If the PHL-7000 or accessories gets damaged due to wrong handling or unauthorized repair, warranty is void. In case the warranty seals are broken, warranty is void too.
- E. Make regularly back-ups of all important data.
- F. Under no circumstance will Opticon be liable for any direct, indirect, consequential or incidental damages arising out of use or inability to use both the hardware and software and/or any data loss, even if Opticon has been informed about the possibility of such damages.

Do not throw this product in the home waste bin. For proper end-of-life treatment consult the Environmental care section of [www.opticon.com](http://www.opticon.com)

For CE, FCC and other DoC's, consult the Regulatory section of [www.opticon.com](http://www.opticon.com)