

Methods for disinfection and sterilization

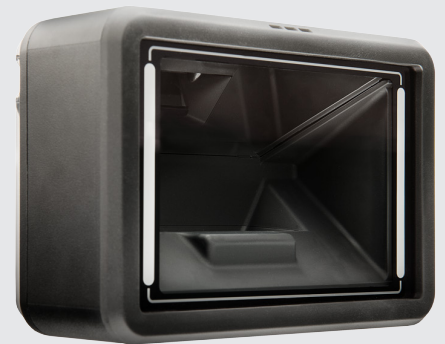
It is recommended to squeeze a cloth soaked in a neutral detergent diluted with water, and then wipe it gently. It is also possible to use disinfectant such as alcohol for disinfection and sterilization. Depending on the disinfectant used, method, area and frequency of use, there is a risk of product deterioration.

Please be aware of the following conditions and risks to the product before use.



Conditions and precautions when wiping with disinfectant

- It is recommended to squeeze a cloth soaked in disinfectant diluted with water and wipe it gently.
- Use necessary hand protection at all times.
- Use a soft cloth or cut cotton when wiping.
- Tissue paper, etc. may contain a dye that causes scratches.
- Do not soak the product in liquid to prevent water droplets from entering the product, or it may cause a malfunction.
- The transparent "reading window" is a delicate part in terms of performance, you can maintain the performance by minimizing the frequency of wiping as much as possible. When wiping, make sure that there are no traces left behind.
- Do not leave disinfectants or liquids on the product fixing screws or cable connection, as they may corrode.
- Do not use strong acidic or alkaline liquids.
- Do not spray disinfectant etc. directly on the product.
- Before cleaning, turn off the power of the device.



Risks when using disinfectant

When using a disinfectant, please perform a test in advance according to disinfectant instructions and be aware of the risks to each part of the following representative disinfectants.

	Case Cover	Reading Window	Protective Rubber	Function	Rubber feet	Cable	Nameplate
	PC/ABS	PMMA	Tpe	PET	PU	PVC	
Absolute ethanol (99.5%)	0	*1	0	*2	*3	*4	*5
Disinfecting ethanol (80%)	0	*1	0	*2	*3	*4	*5
Isopropyl alcohol (70%)	0	*1	0	0	*3	*4	*5
Sodium hypochlorite (5%)	0	0	*3	0	*3	0	*5
Hypochlorous acid water	*2	0	*2	0	*3	0	*5
Hydrogen peroxide solution (3%)	*2	0	*2	0	*3	0	*5

0 Can be used.

*1 Whitening may occur, and the reading performance may be affected.

*2 Whitening may occur after long-term use.

*3 It may deteriorate the resin.

*4 If used for a long period of time, the plastic may come off and harden.

*5 The label may peel off or the print may be erased

